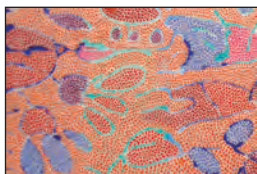


2009-2010

Season

ST. ASAPH gallery



Rhea Dennis: "Secrets of the Sacred Seed"

September 18 through October 18, 2009

HAND-MADE PAPER PAINTINGS

OPENING RECEPTION: FRIDAY, SEPTEMBER 18, 2009, 6:00-8:00PM



Oasis Arts and Education

AN ARTIST-RUN PROGRAM WORKING WITH ADULTS WITH MENTAL DISABILITIES

October 23 through November 15, 2009

OPENING RECEPTION: FRIDAY, OCTOBER 23, 2009, 6:00-8:00PM

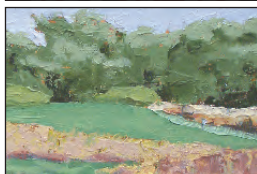


Christina E. Johnson

FIBER ARTIST AND QUILTER

November 20, 2009 through January 3, 2010

OPENING RECEPTION: FRIDAY, NOVEMBER 20, 2009, 6:00-8:00PM



Laura Barton

OIL ON CANVAS

January 8 through February 7, 2010

OPENING RECEPTION: FRIDAY, JANUARY 8, 2010, 6:00-8:00PM



Melissa Bollmann-Jenkins

ACRYLIC ON CANVAS

February 19 through March 21, 2010

OPENING RECEPTION: FRIDAY, FEBRUARY 19, 2010, 6:00-8:00PM



Ric Best

DIGITALLY-ALTERED PHOTOGRAPHY

April 4 through May 2, 2010

OPENING RECEPTION: FRIDAY, APRIL 9, 2010, 6:00-8:00PM



**"Tossed and Found": Recycled and Found Object Art
by Ellen Sall and Linda Lou Horn**

May 7 through June 6, 2010

RECEPTION/EARTH DAY PRESENTATION: FRIDAY, MAY 7, 2010
6:00-8:00PM



Tony Rocco: "Abriendo Ojos"

(Opening Eyes/Changing Perceptions)

PHOTOGRAPHIC IMAGES FROM COLOMBIA

June 11 through July 11, 2010

OPENING RECEPTION: FRIDAY, JUNE 11, 2010, 6:00-8:00PM